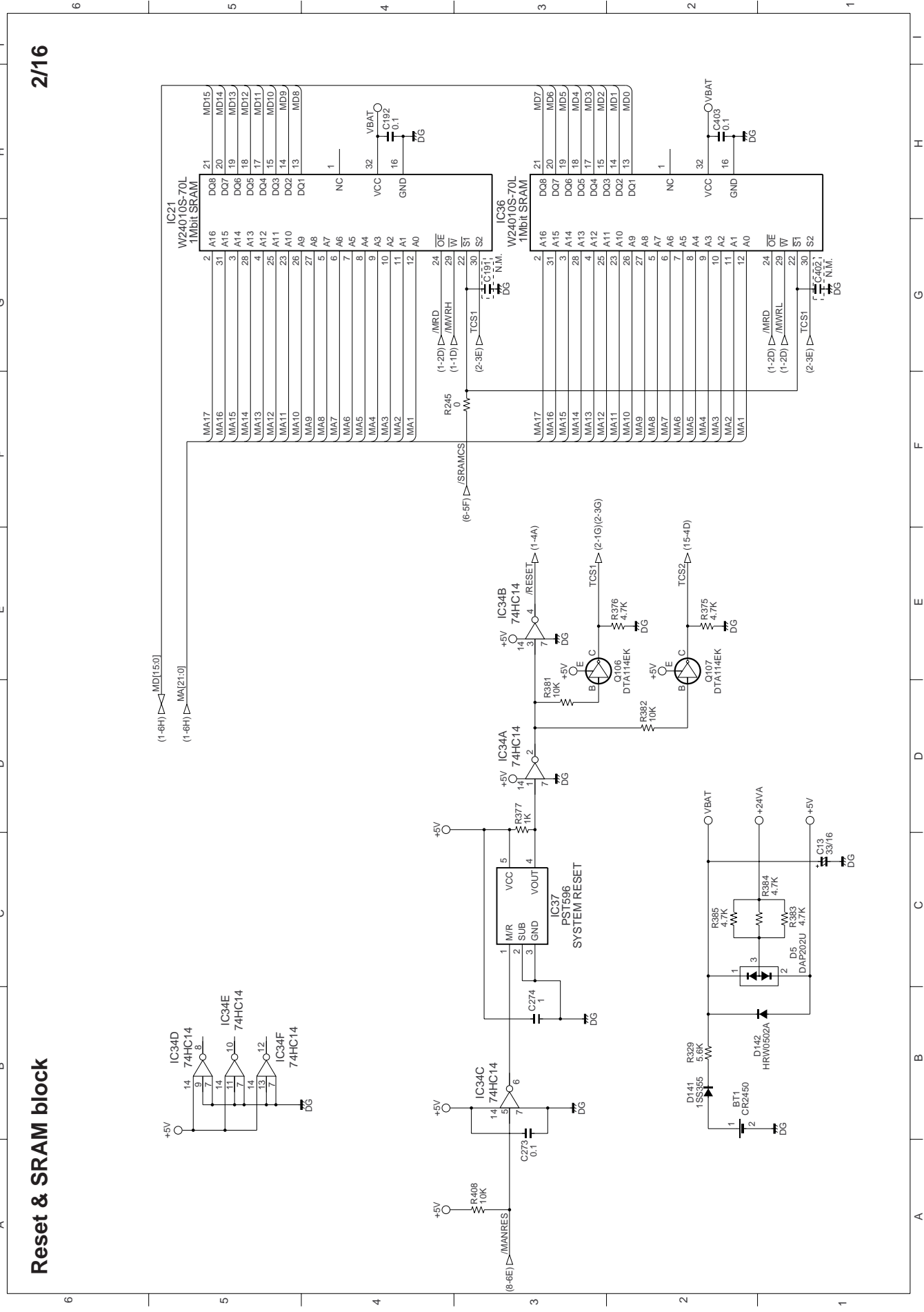




Reset & SRAM block

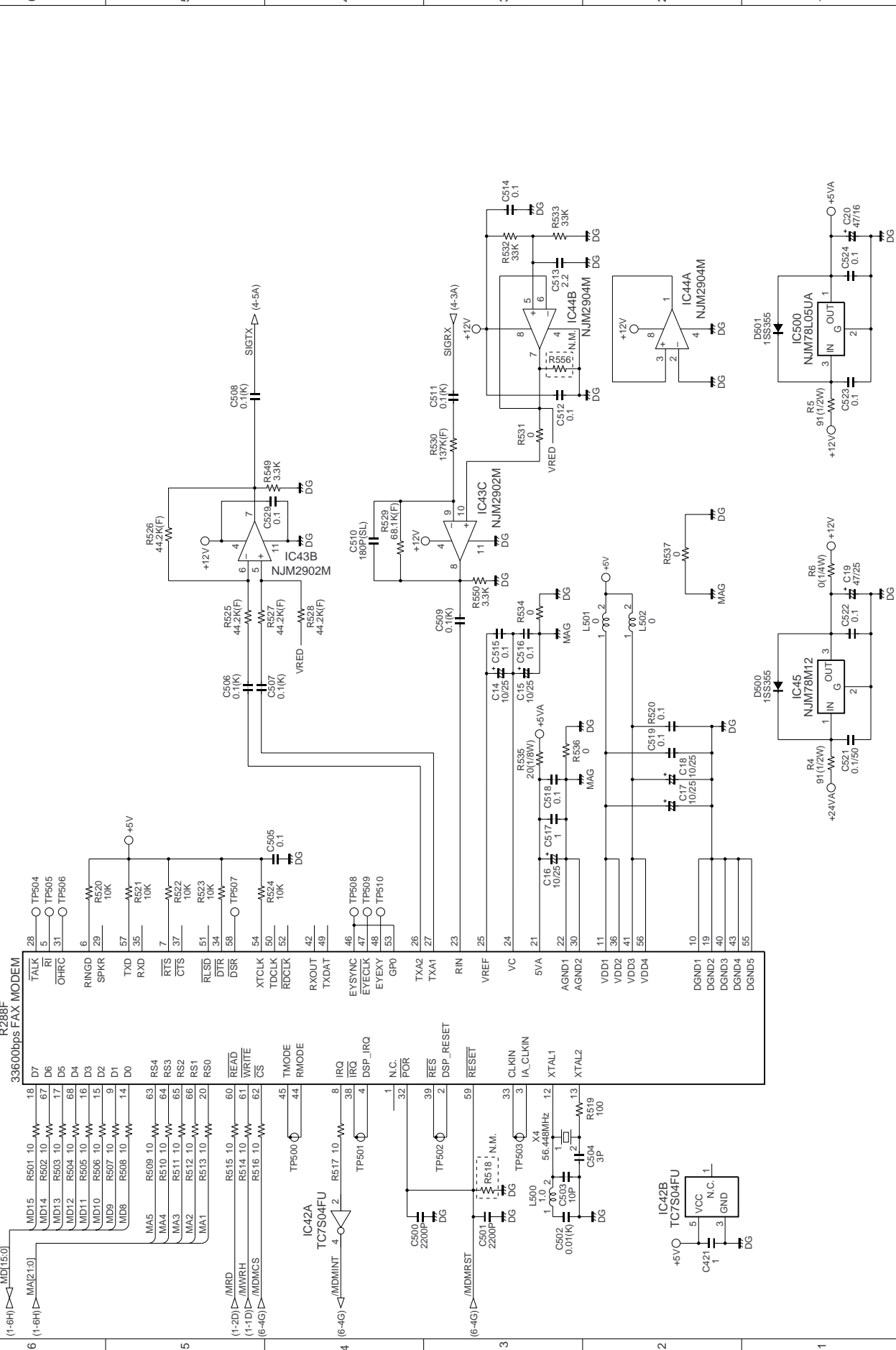


# Modem block 1

IC41  
R288F

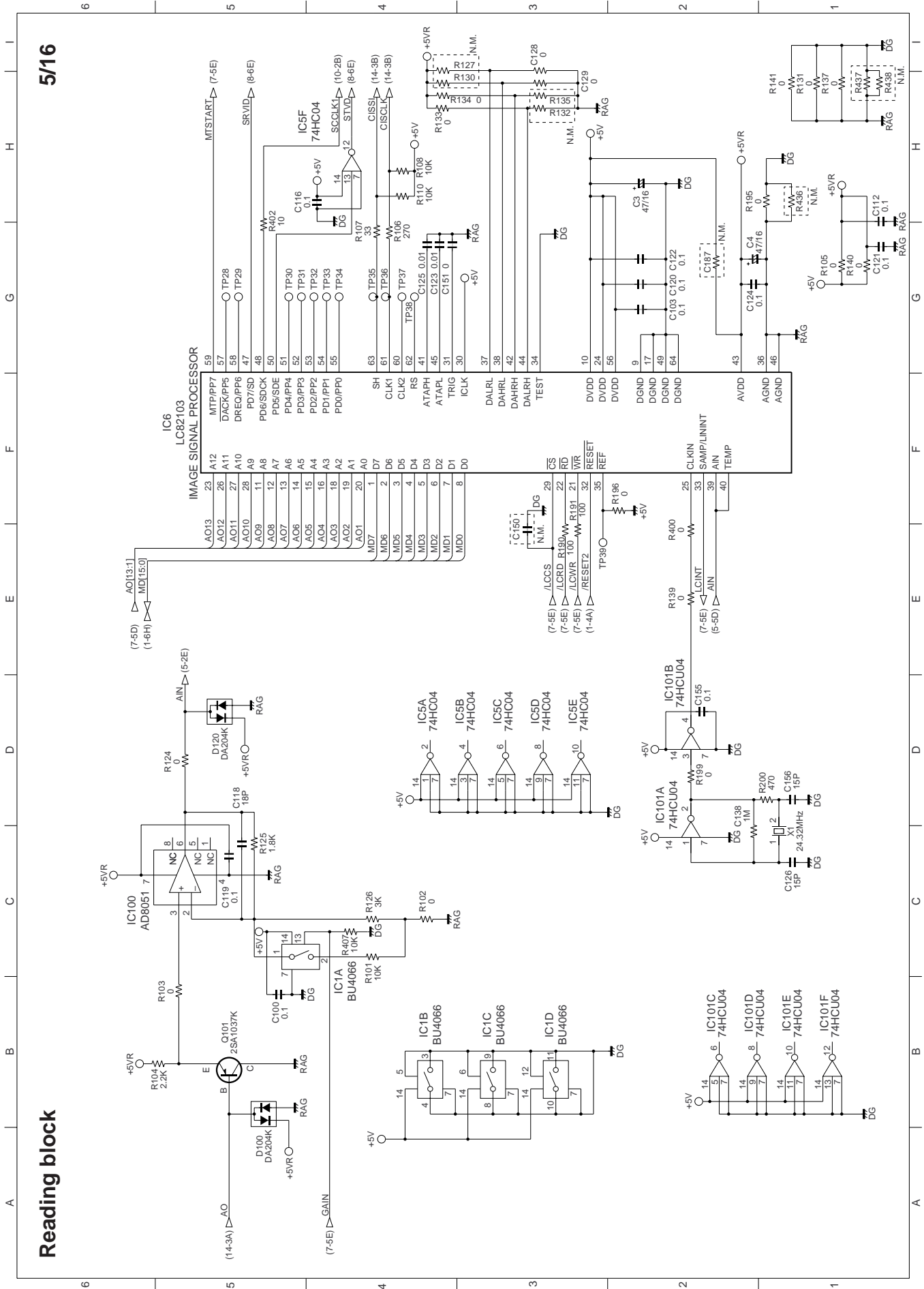
33600bps FAX MODEM

IC42A  
TC7S04FU





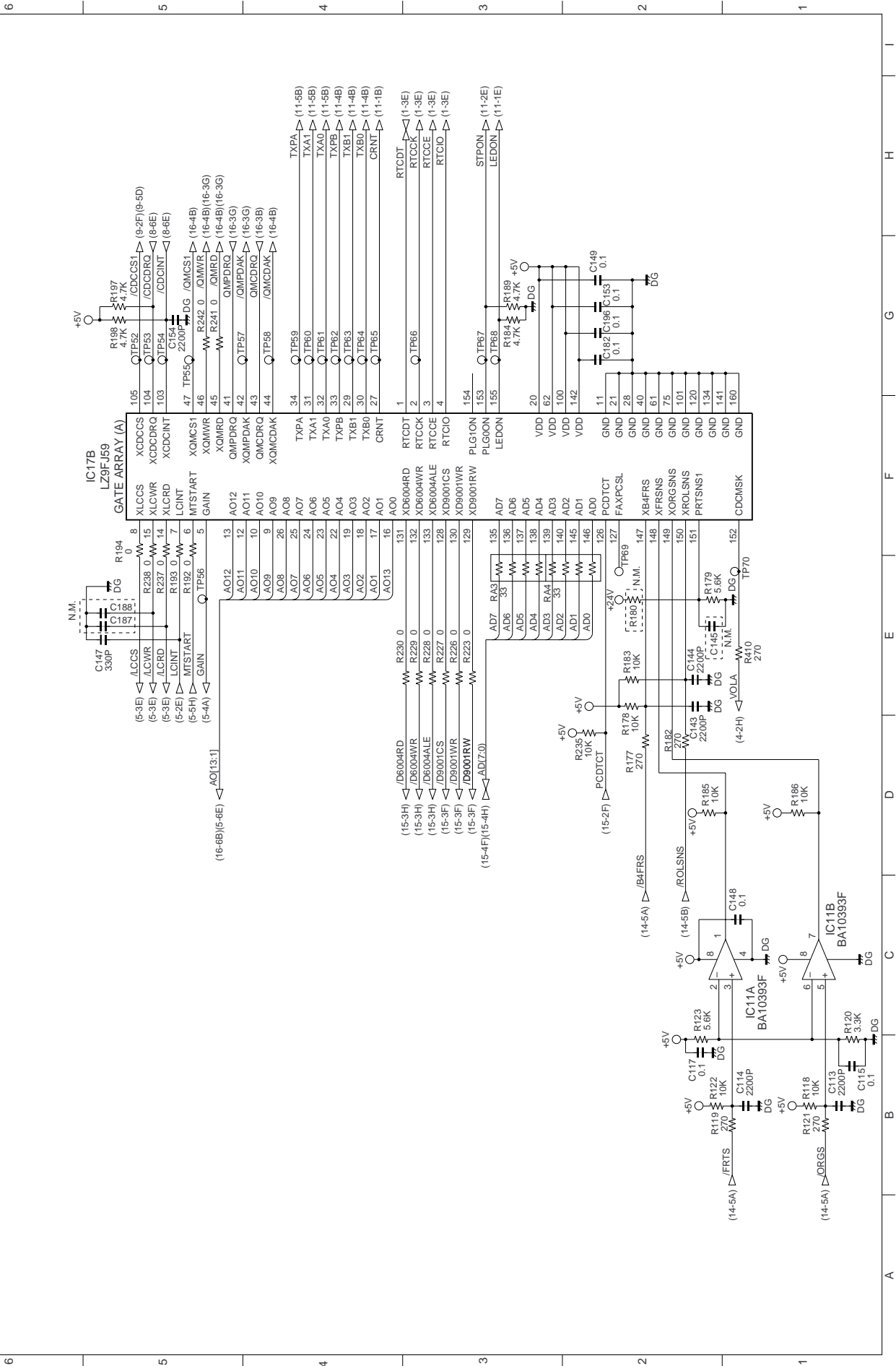
Reading block

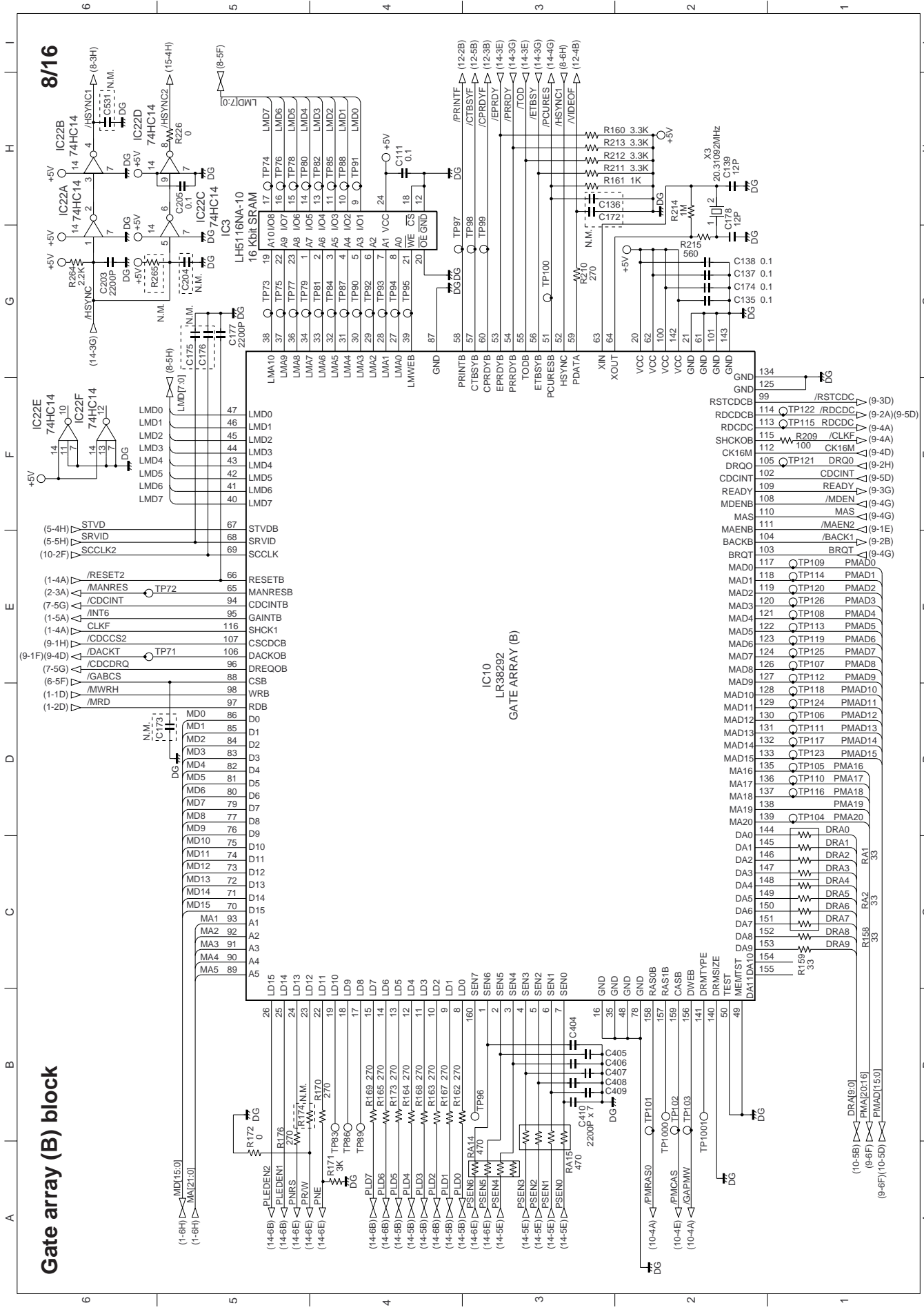




### Gate array (A) block 2

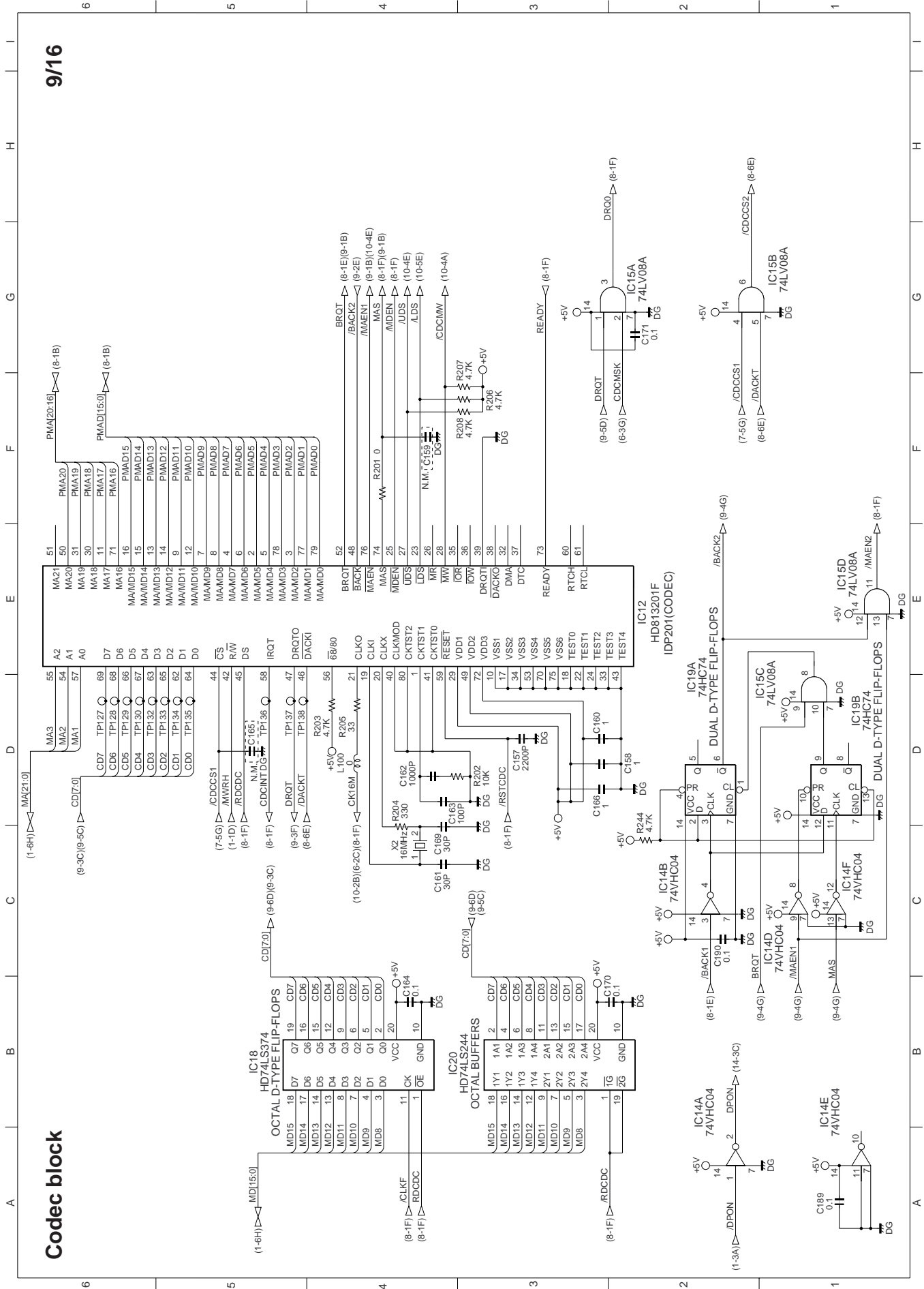
7/16

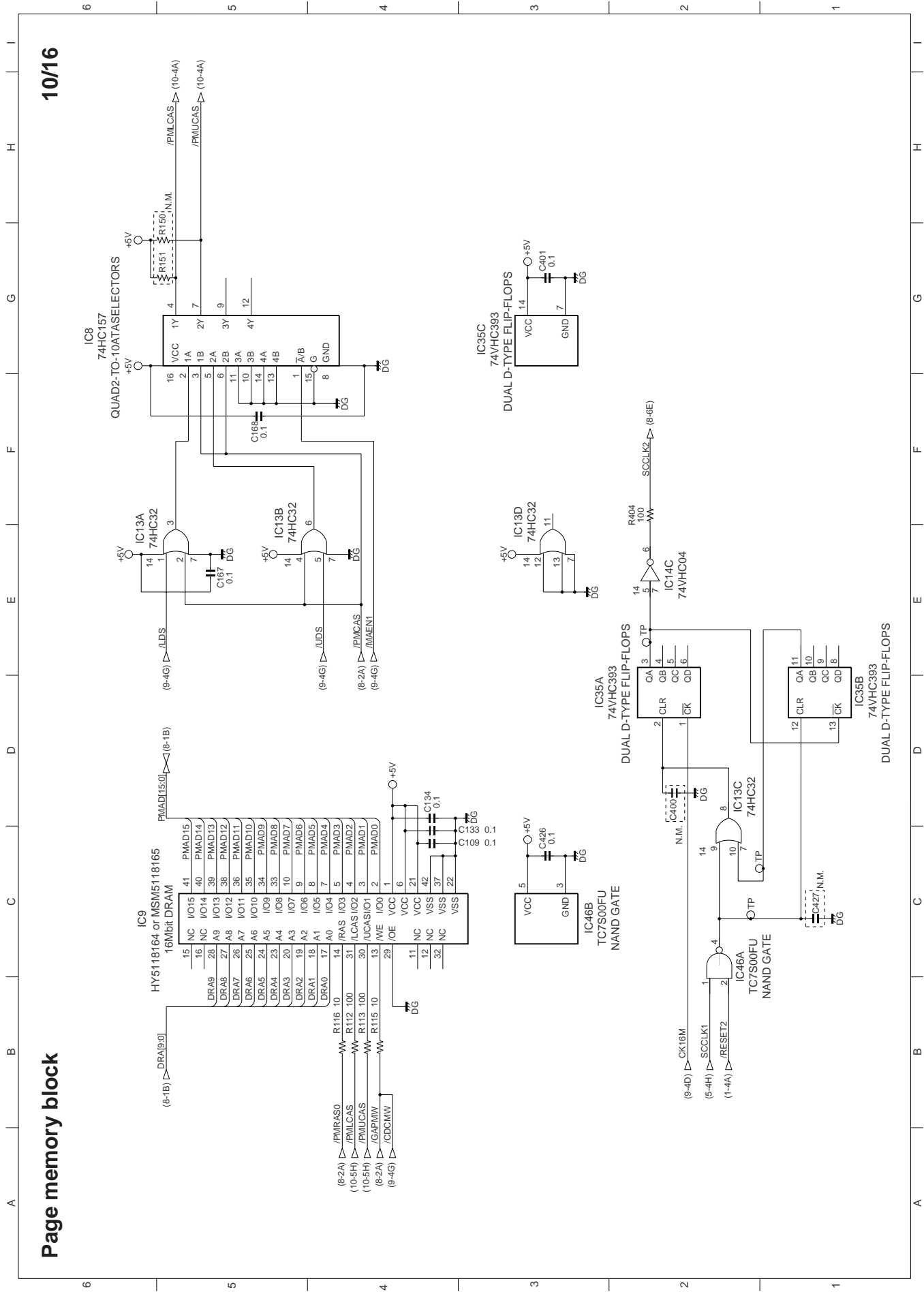




Gate array (B) block





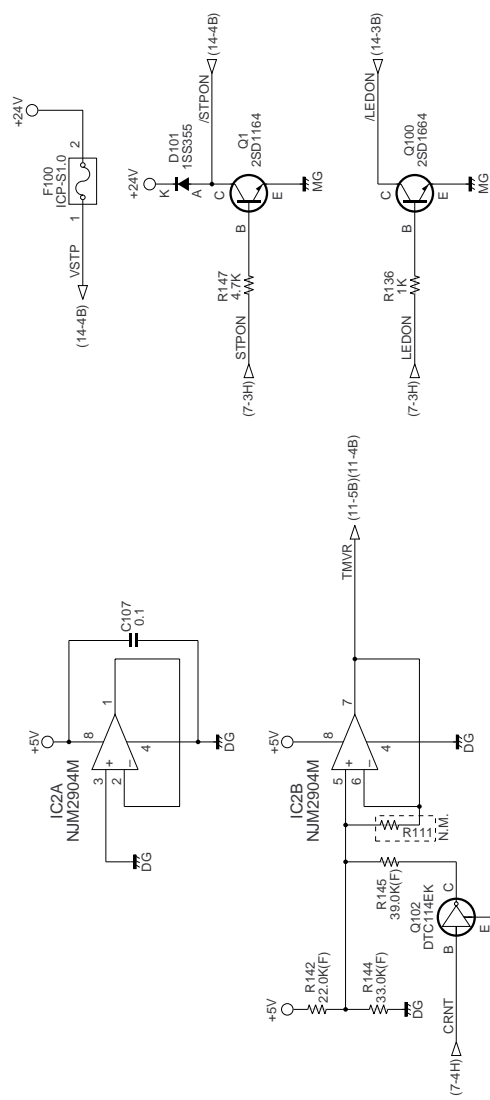
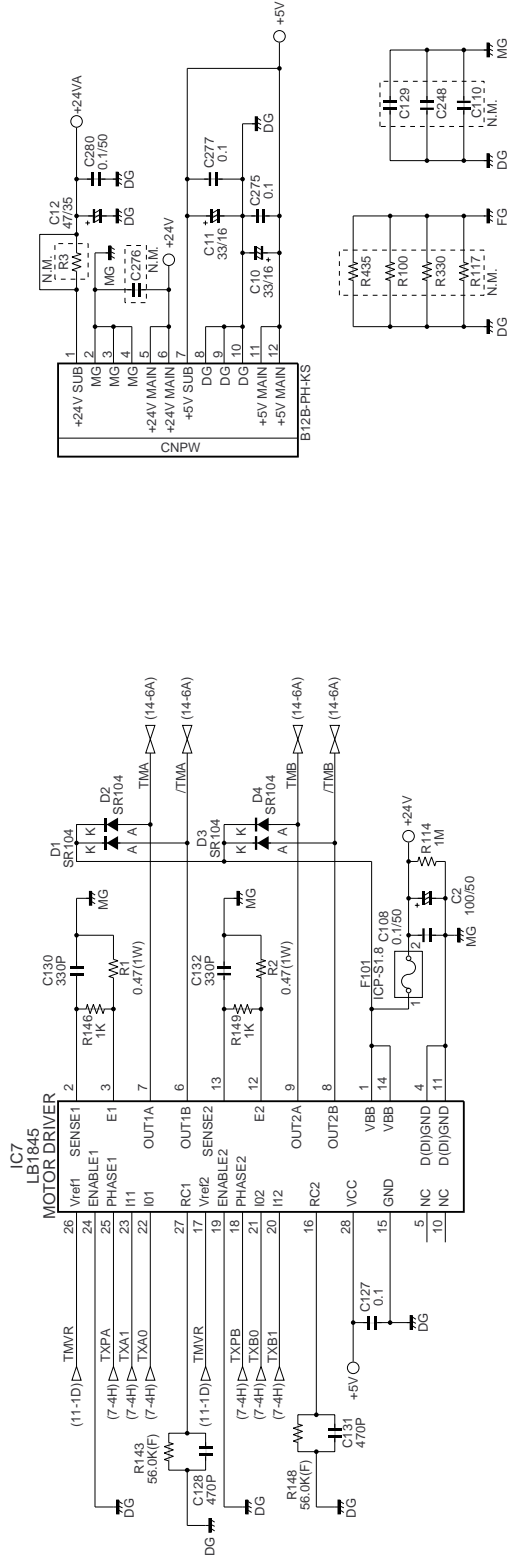


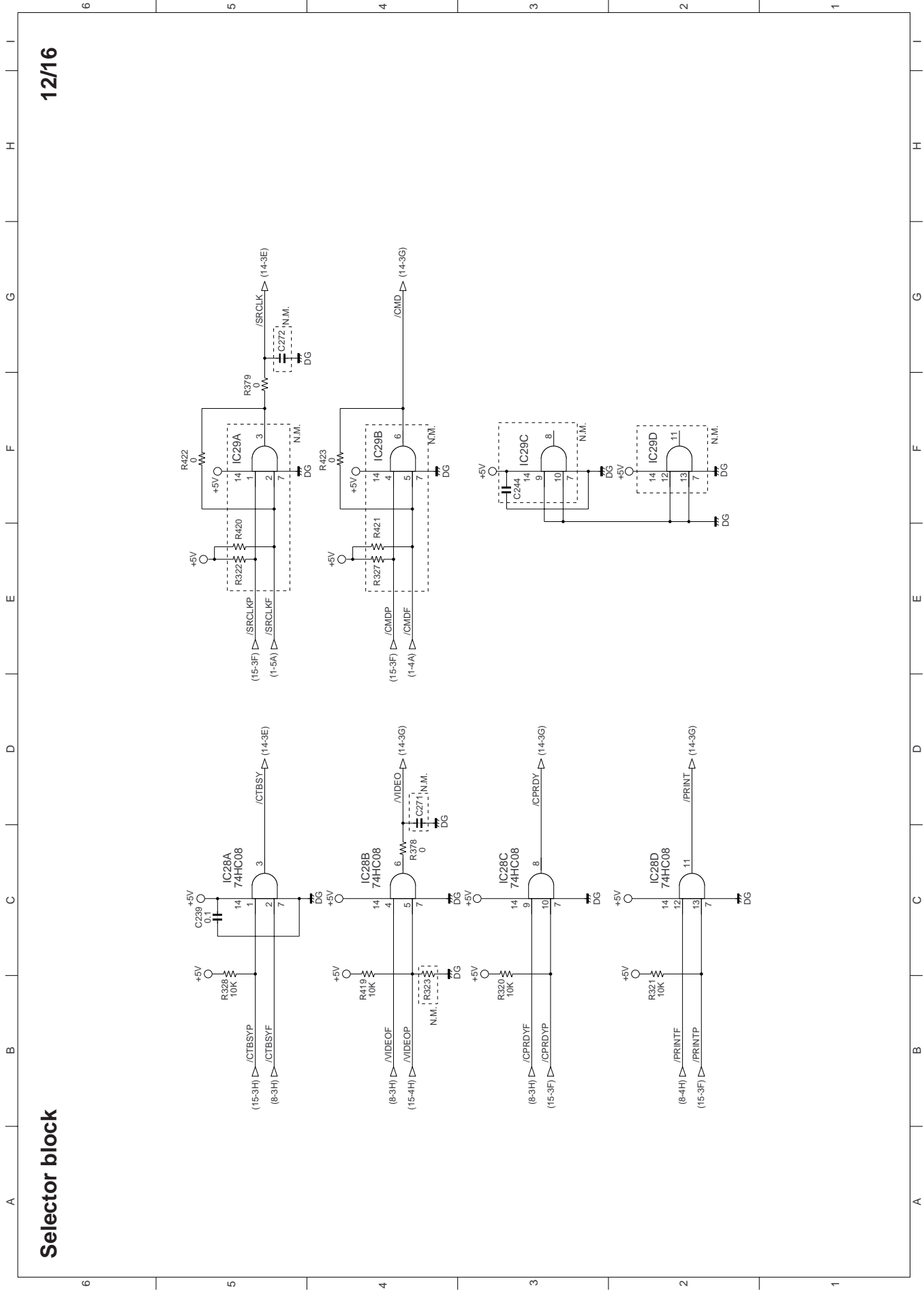
10/16

Page memory block

11/16

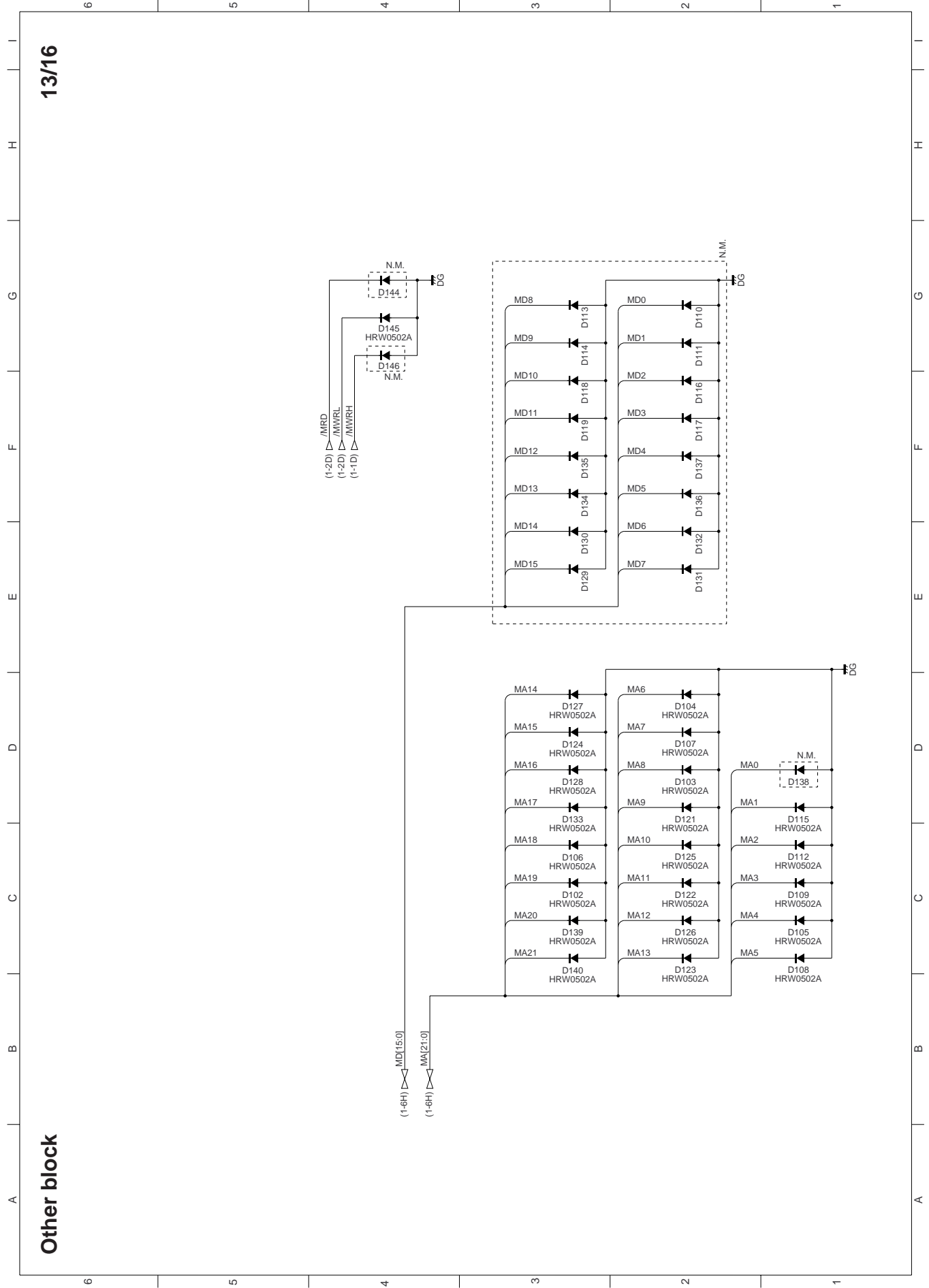
Drive & Power supply block





12/16

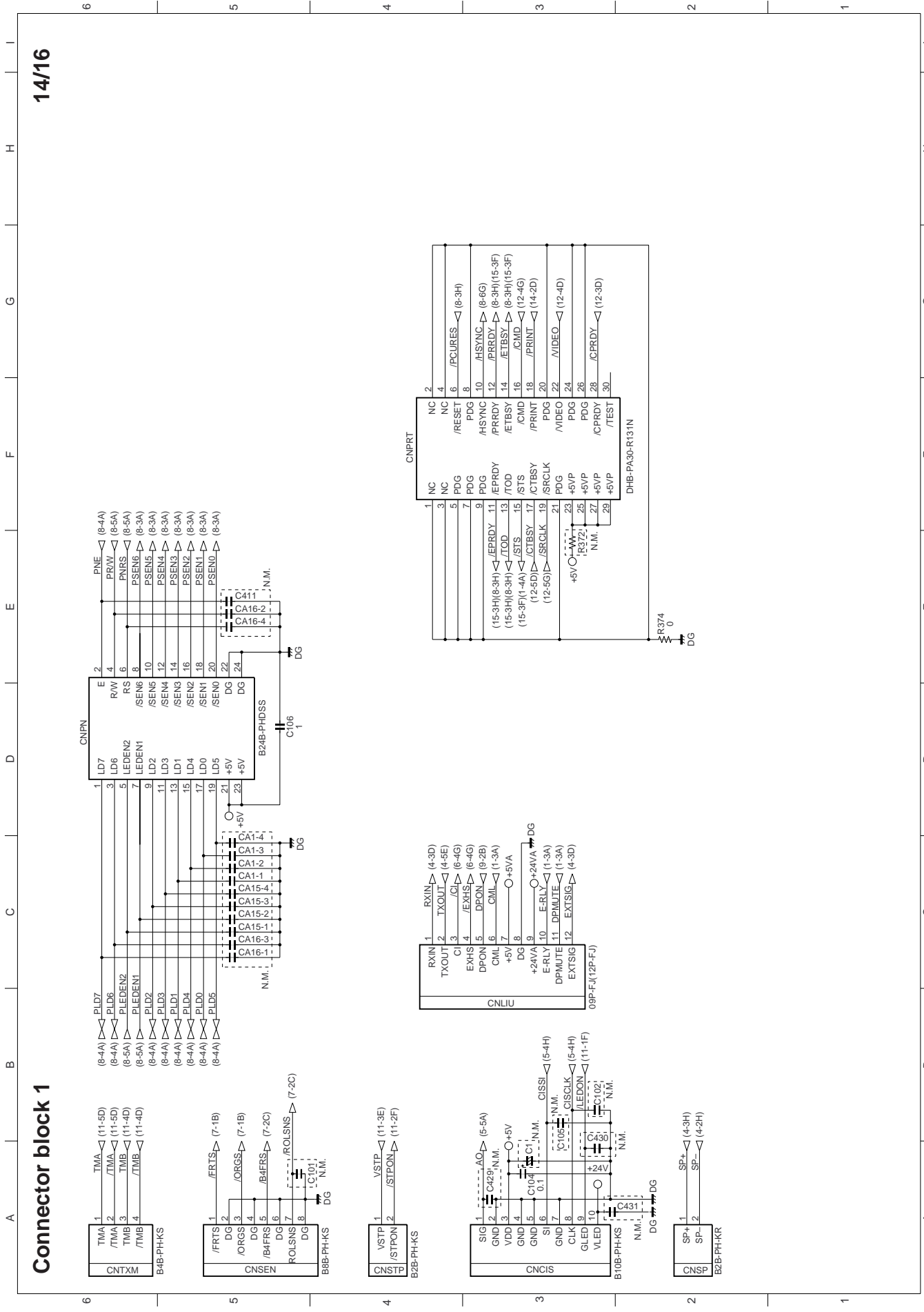
Selector block



13/16

Other block

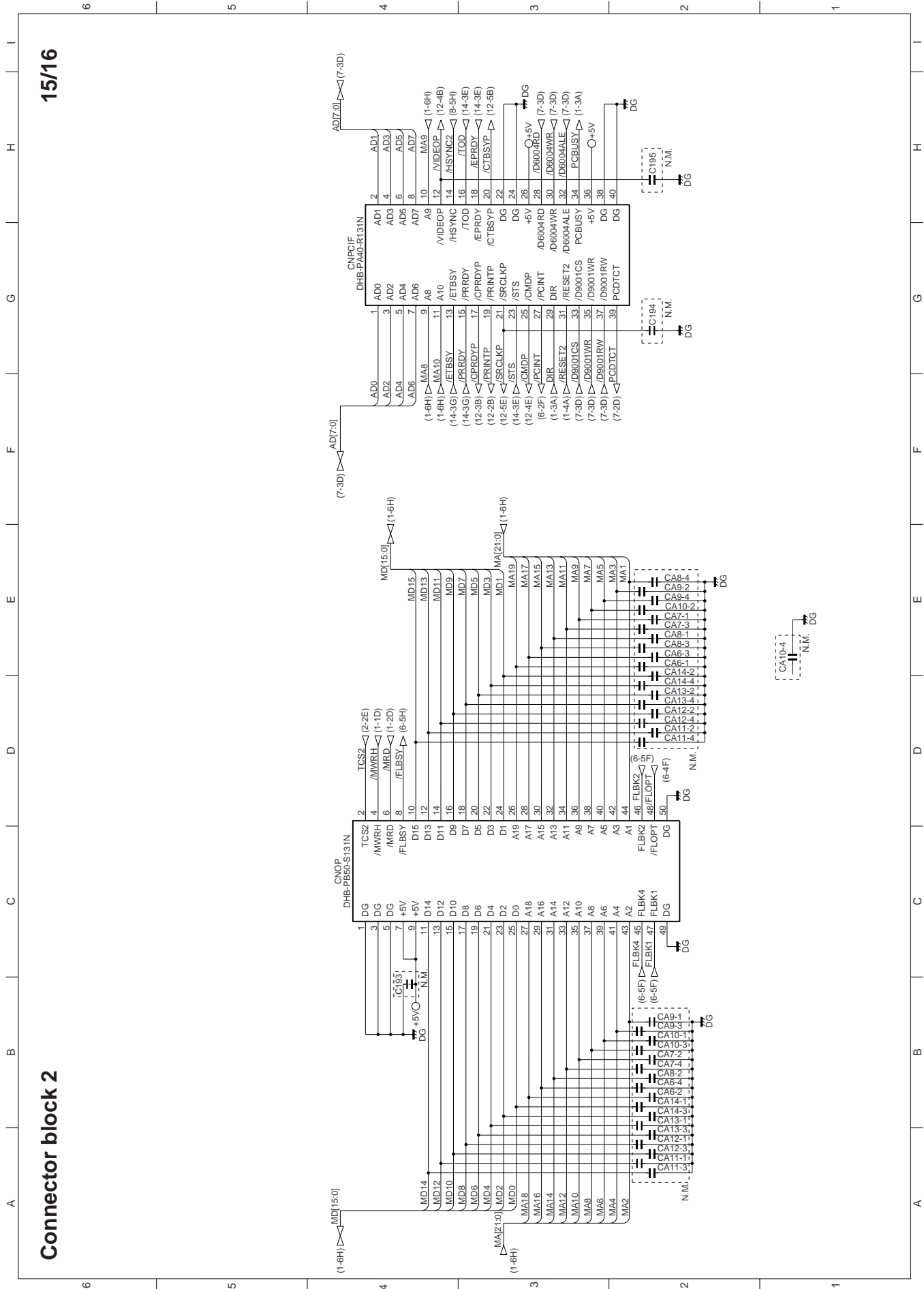
14/16

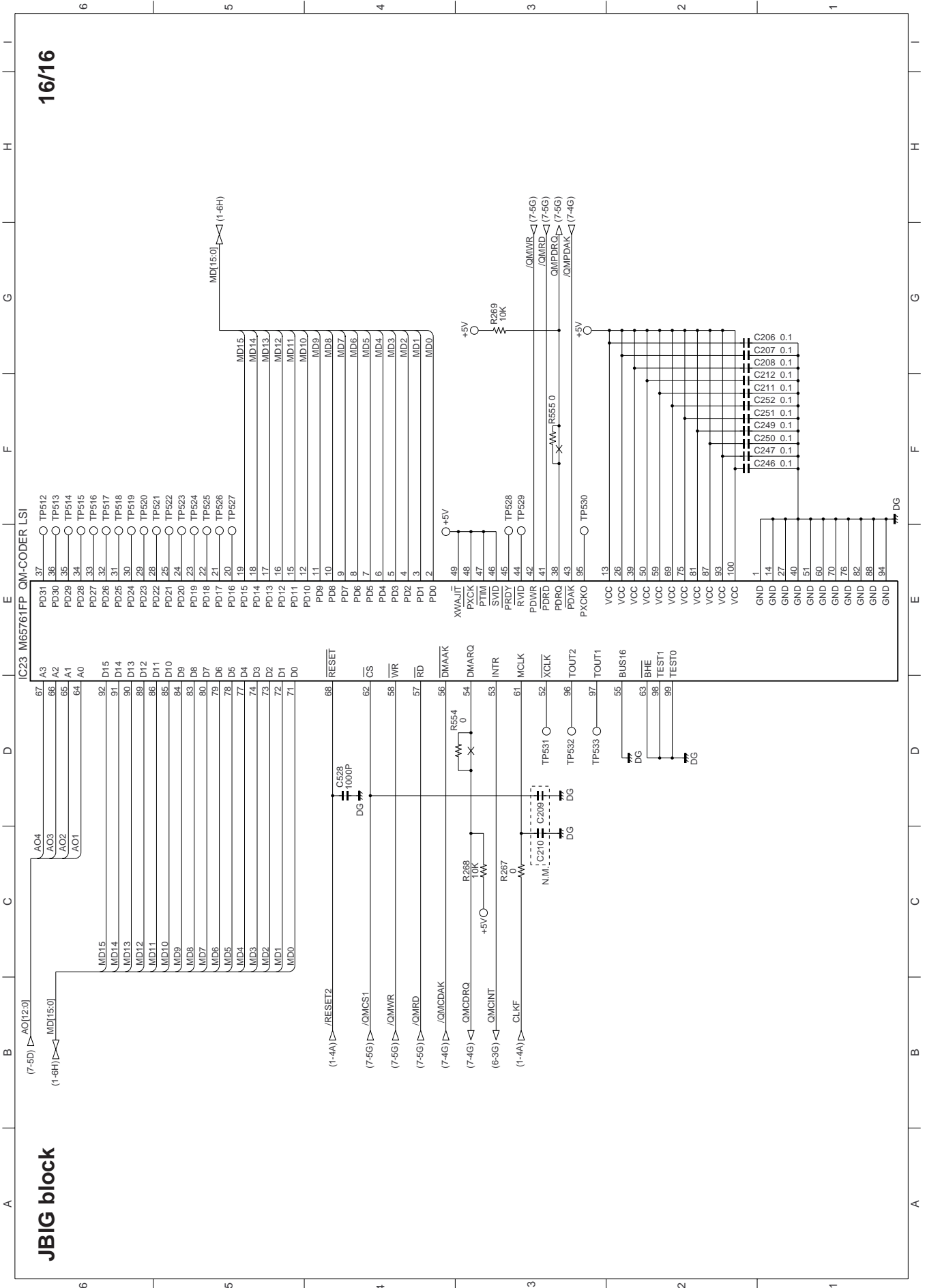


Connector block 1

15/16

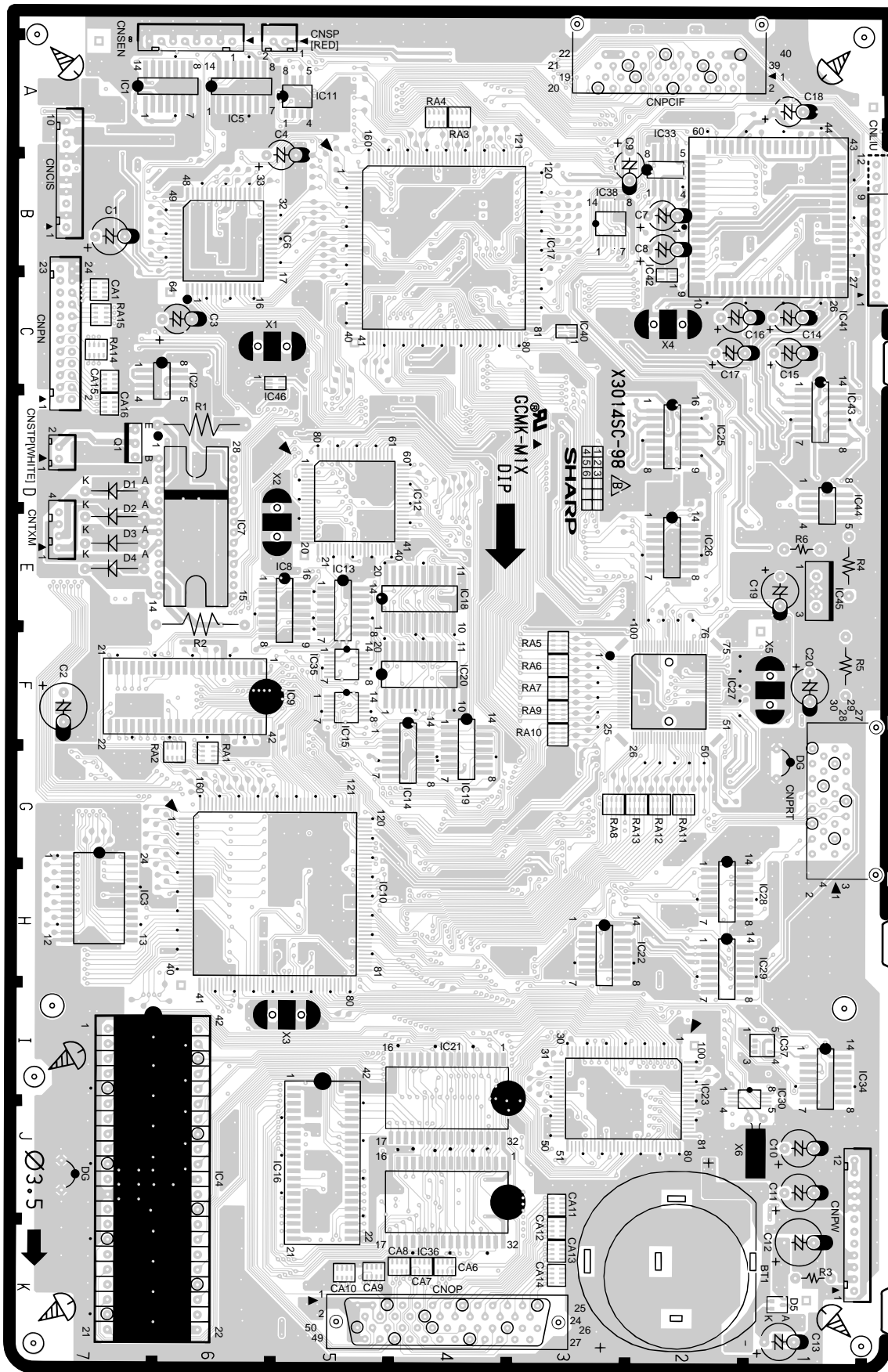
Connector block 2



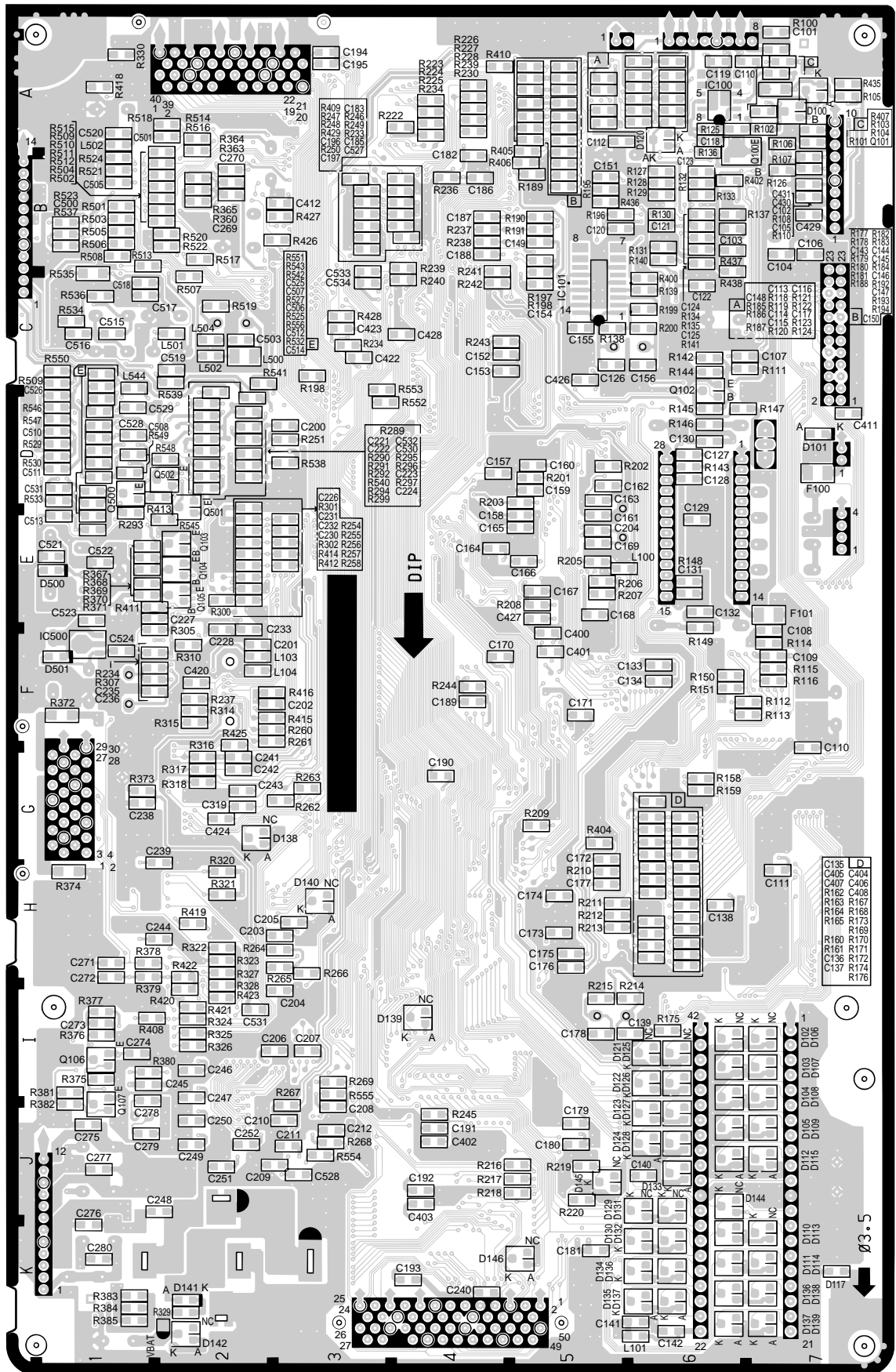




# Control PWB parts layout (Top side)

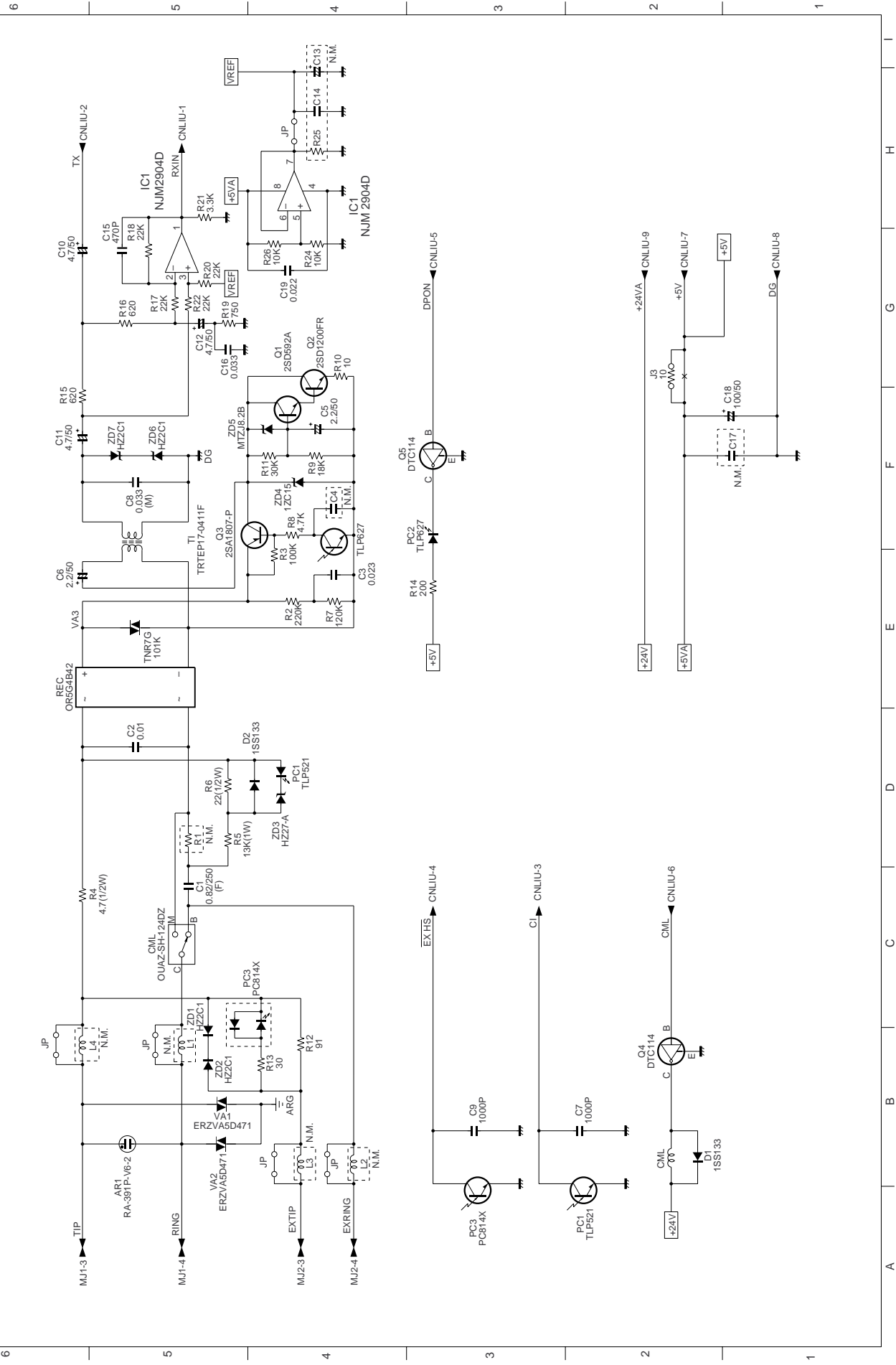


# Control PWB parts layout (Bottom side)

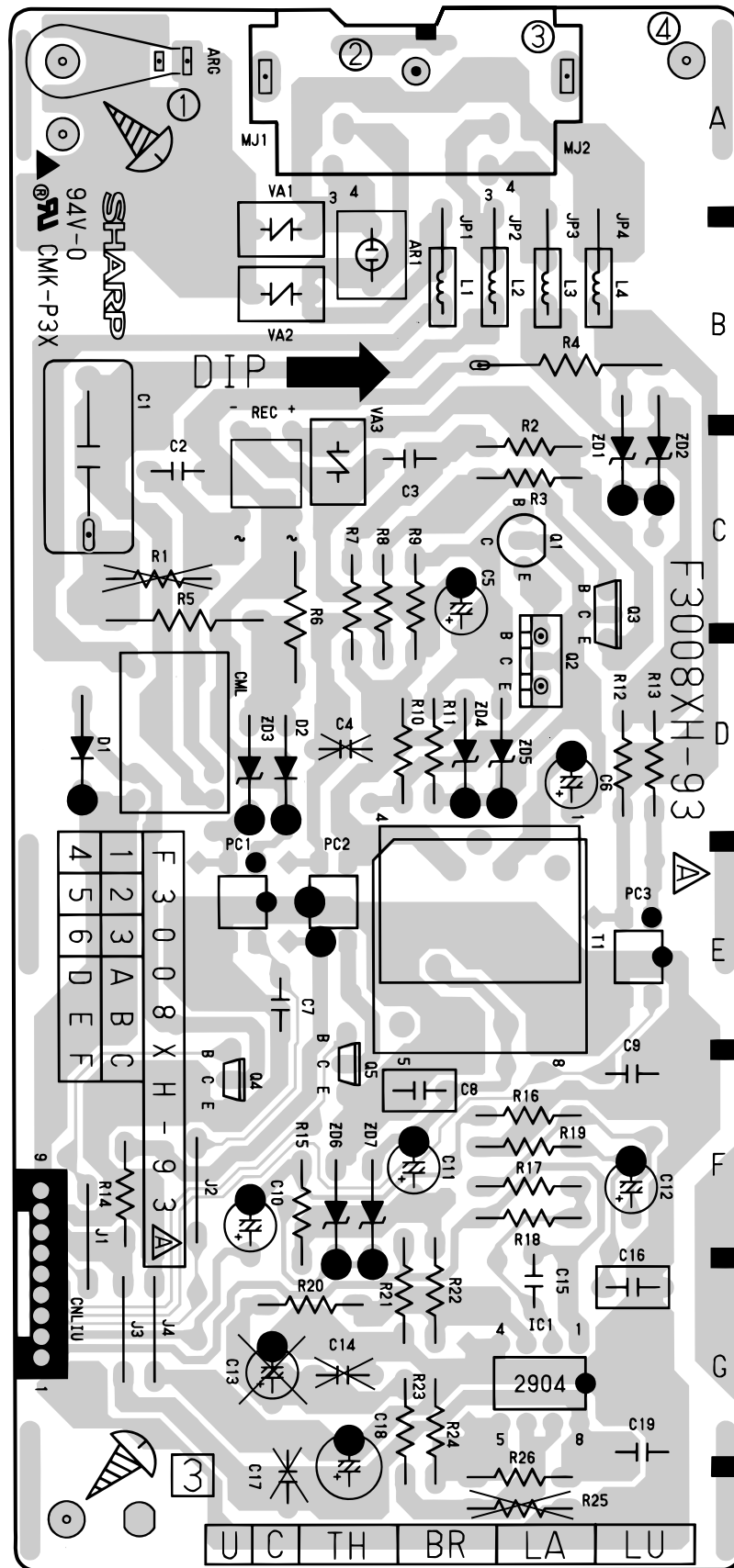


[2] LIU PWB circuit

1/1

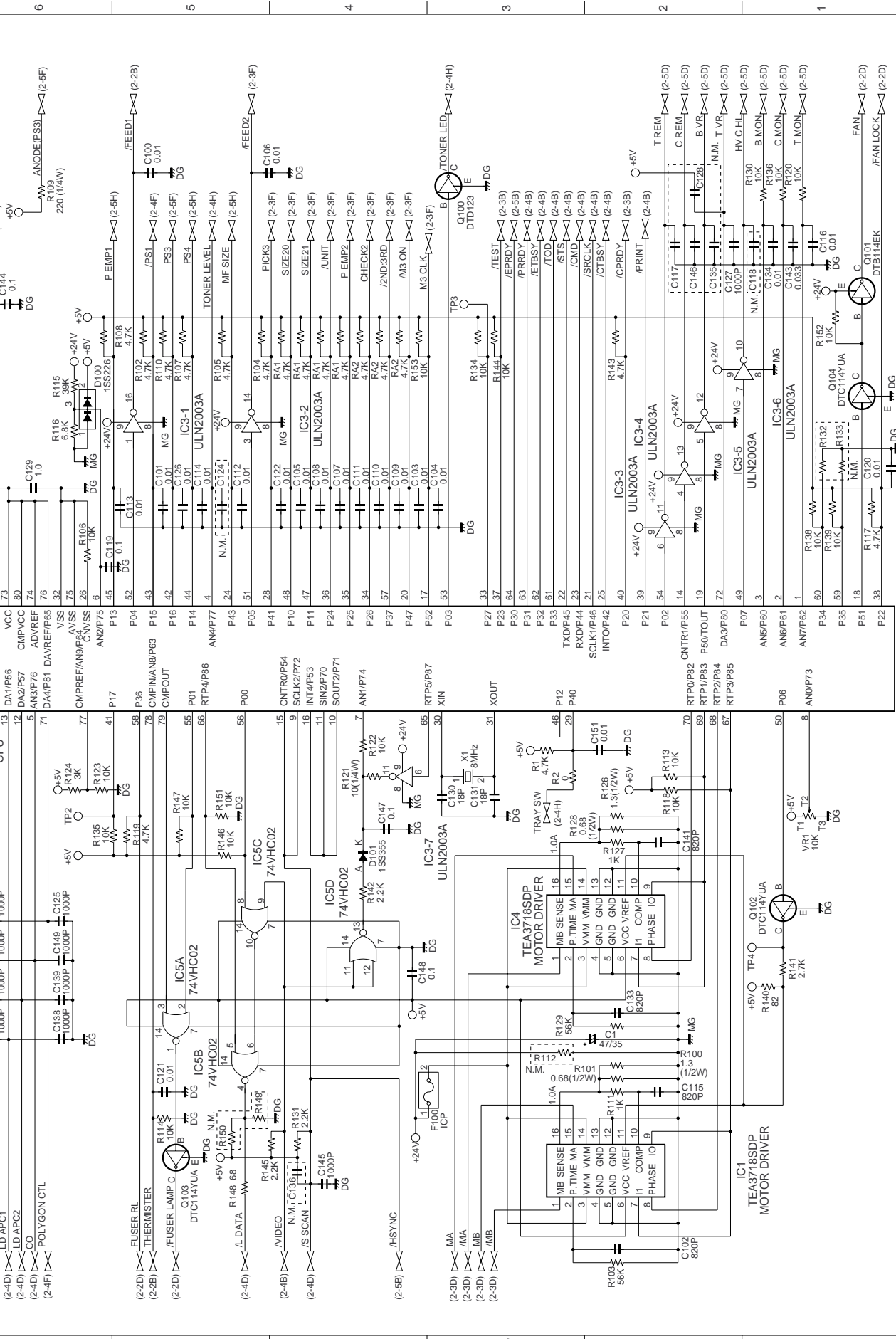


LIU PWB parts layout



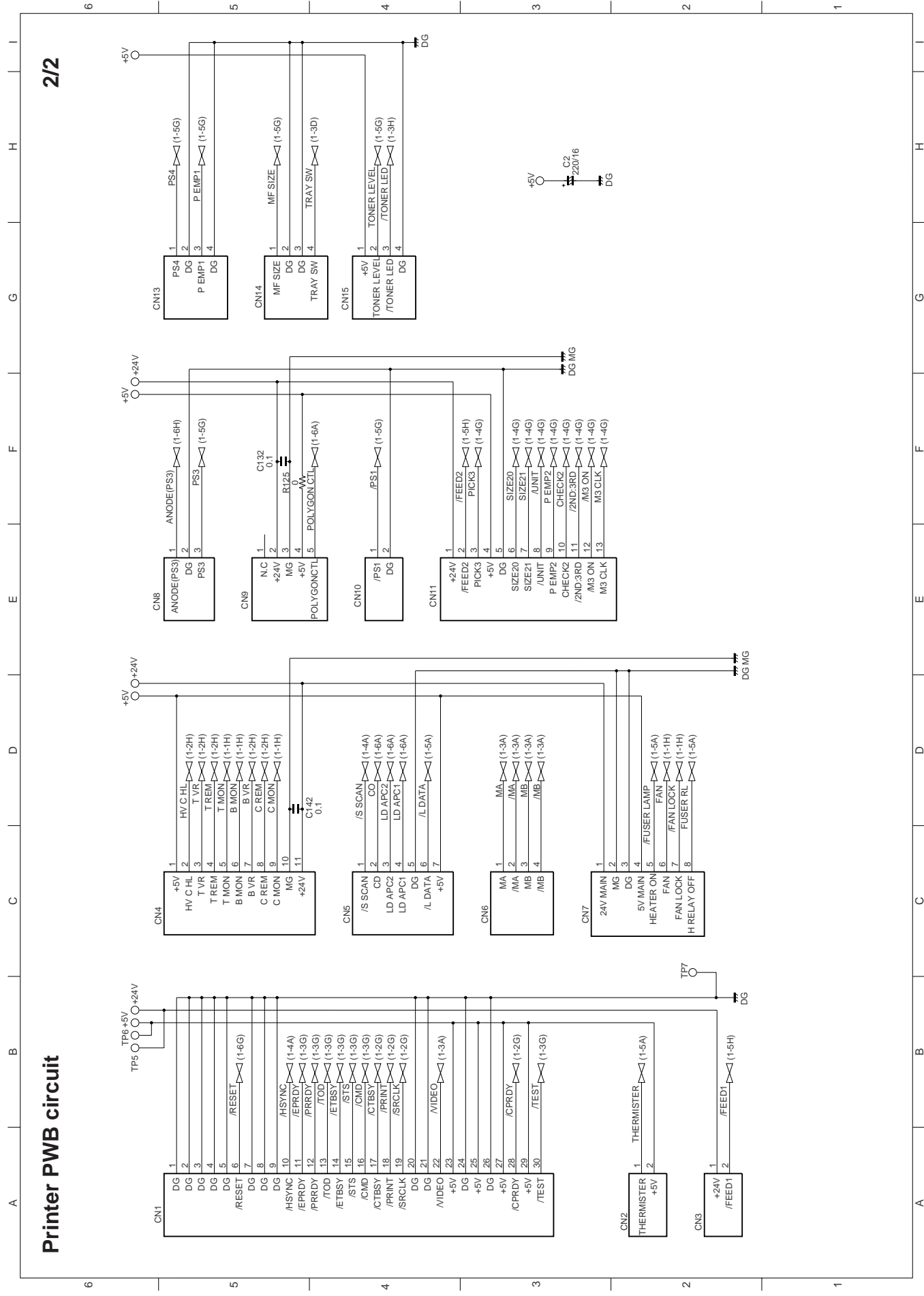
1/2

[3] Printer PWB circuit

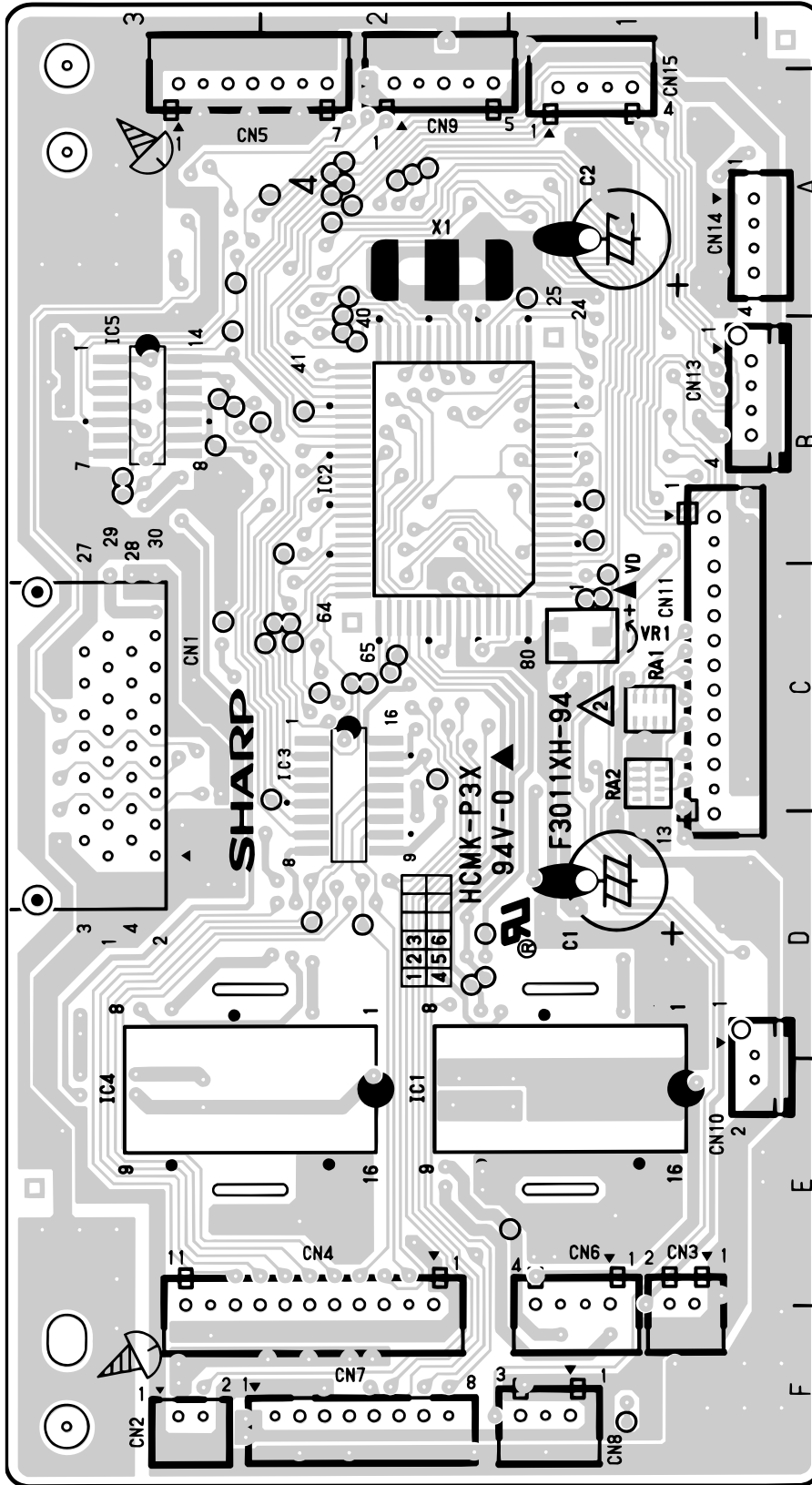


Printer PWB circuit

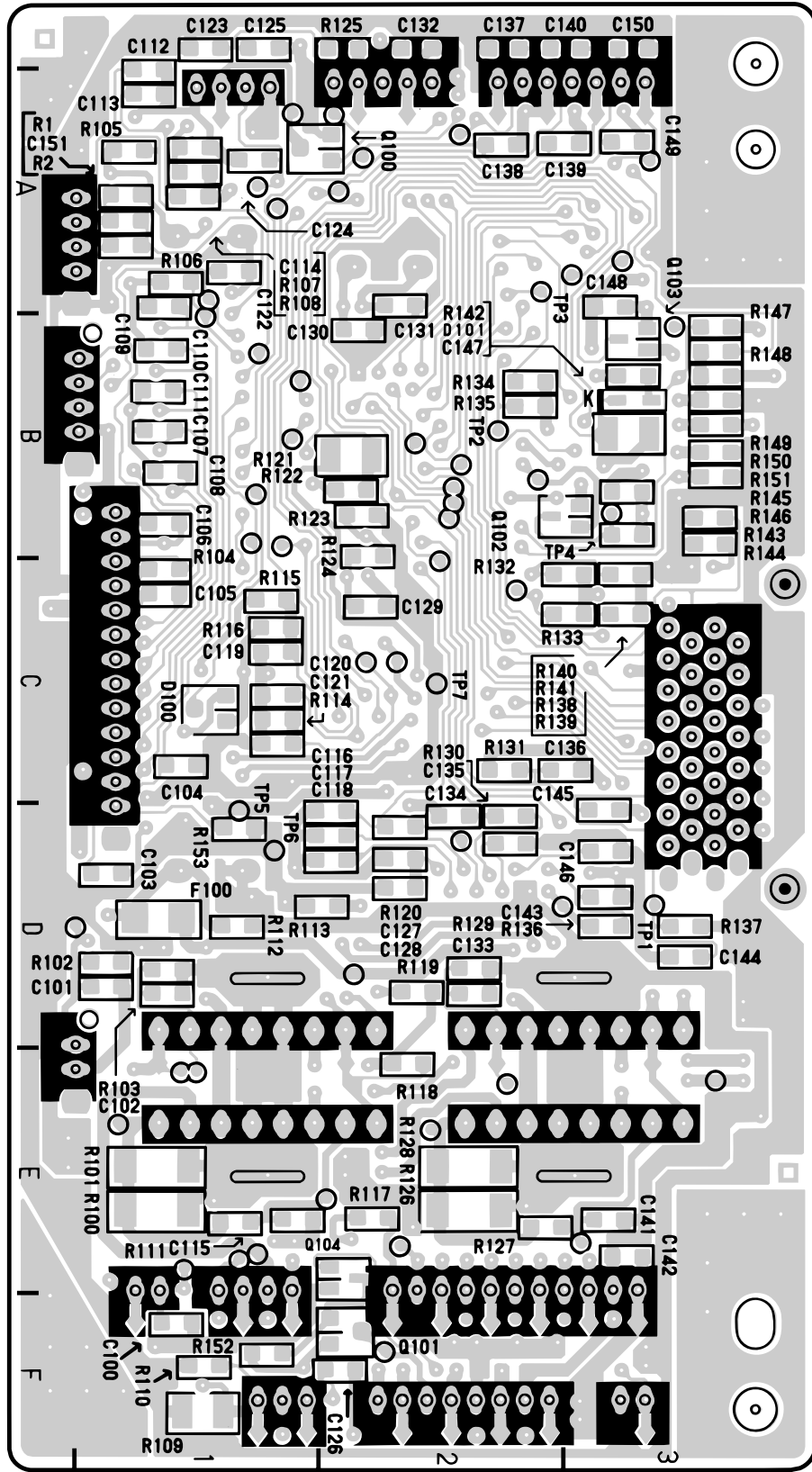
2/2



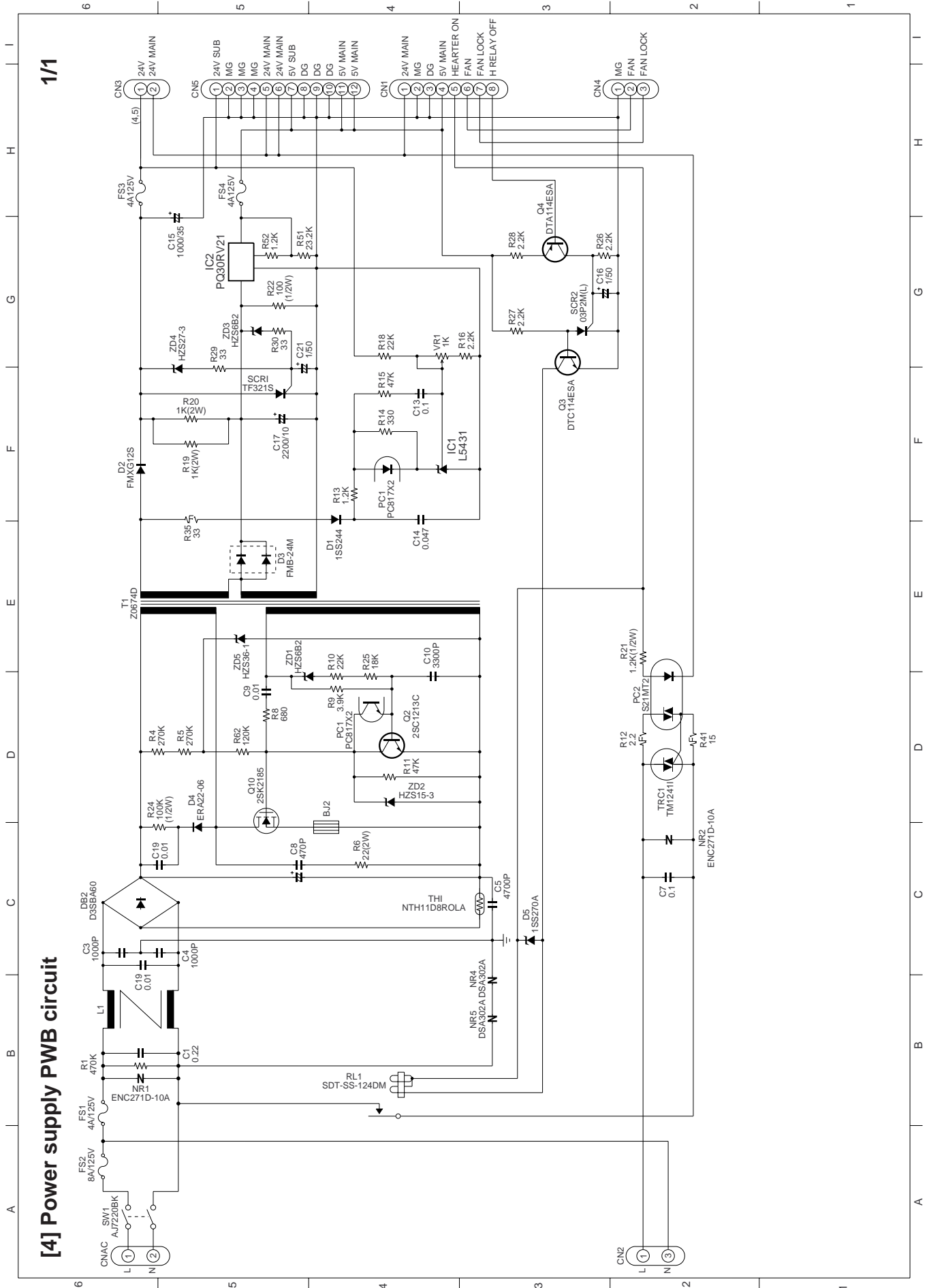
Printer PWB parts layout (Top side)



Printer PWB parts layout (Bottom side)

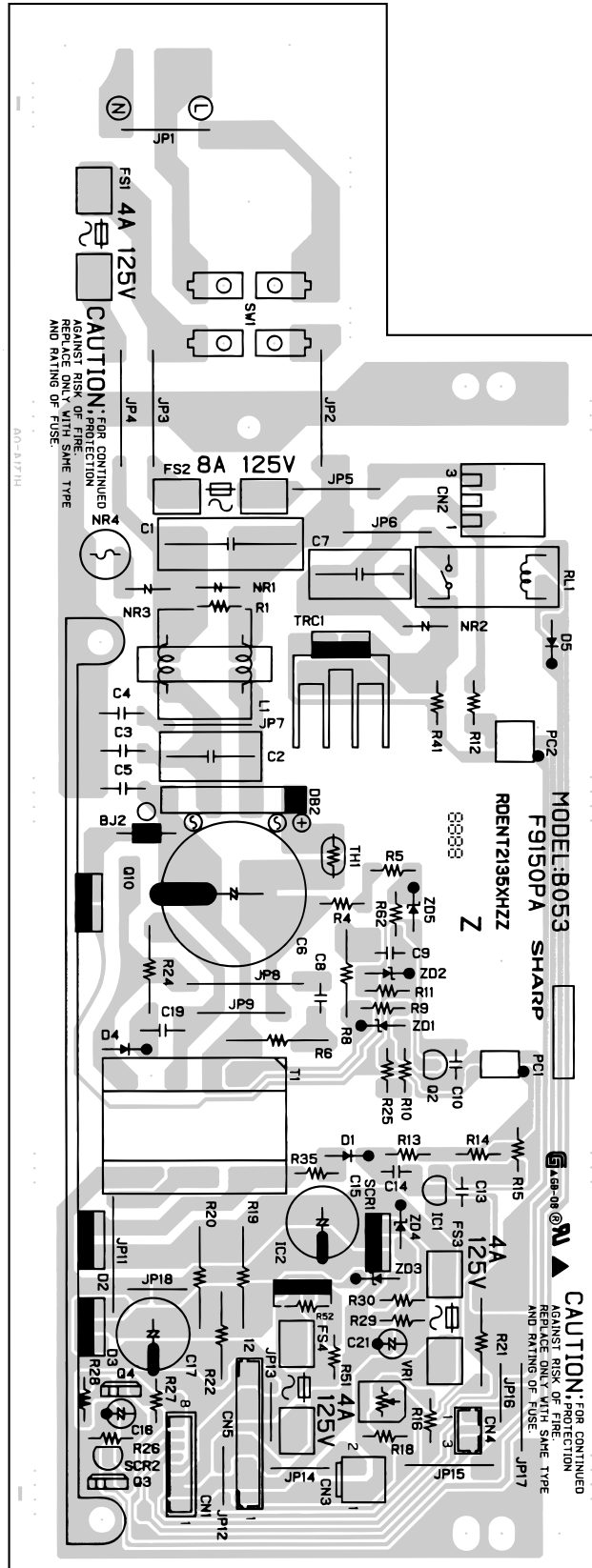






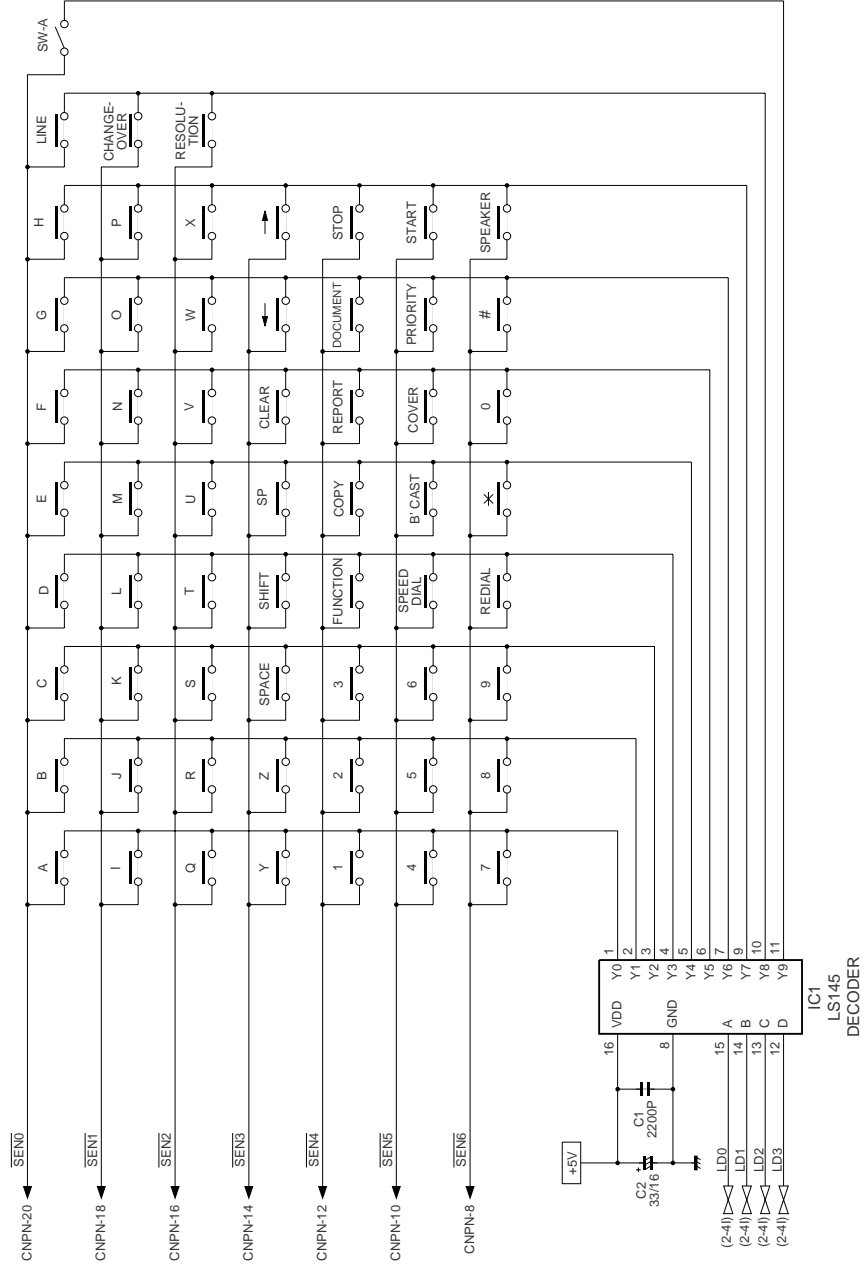
[4] Power supply PWB circuit

# Power supply PWB parts layout



### [5] Operation panel PWB circuit

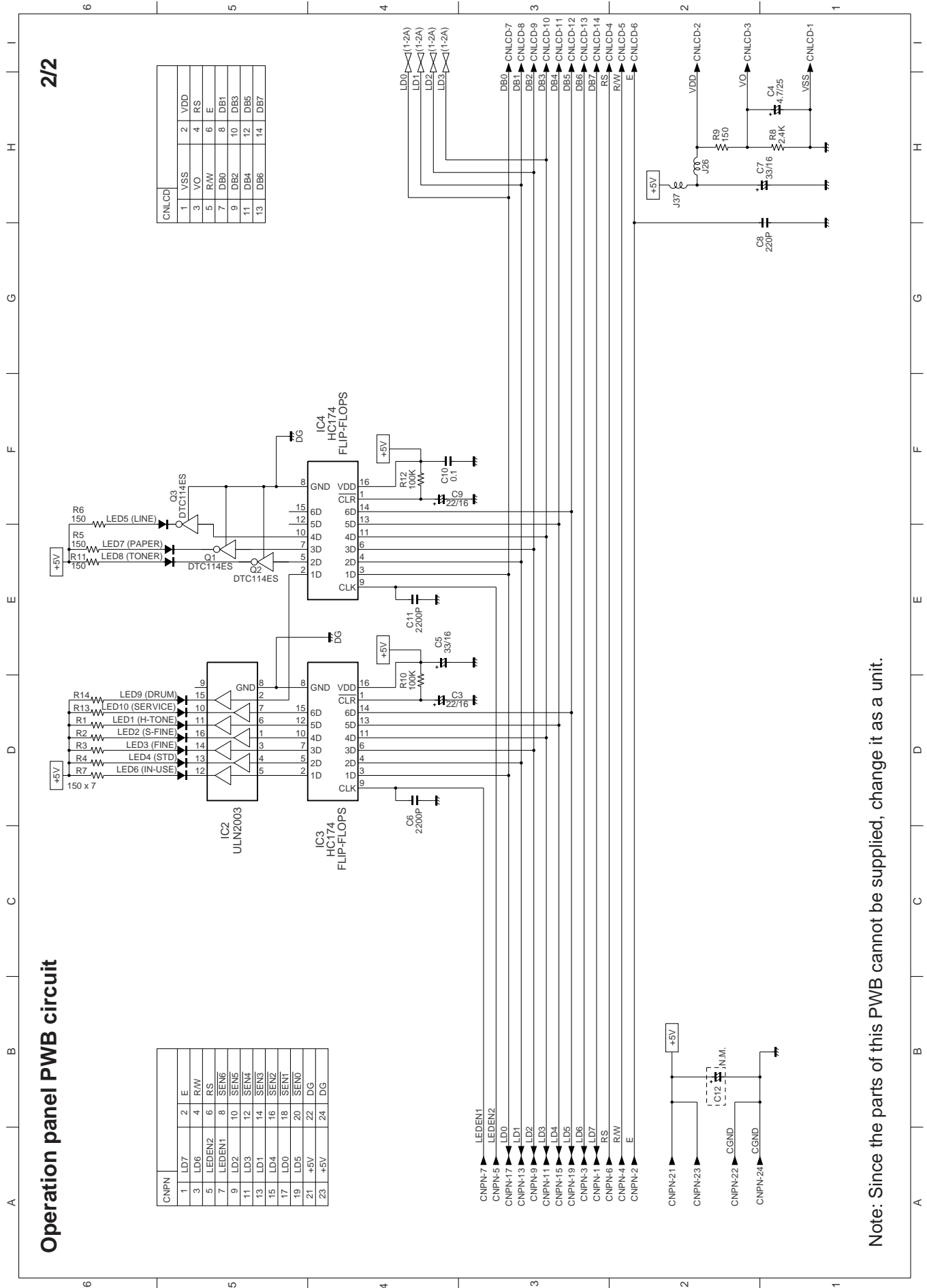
1/2



Note: Since the parts of this PWB cannot be supplied, change it as a unit.

Operation panel PWB circuit

2/2

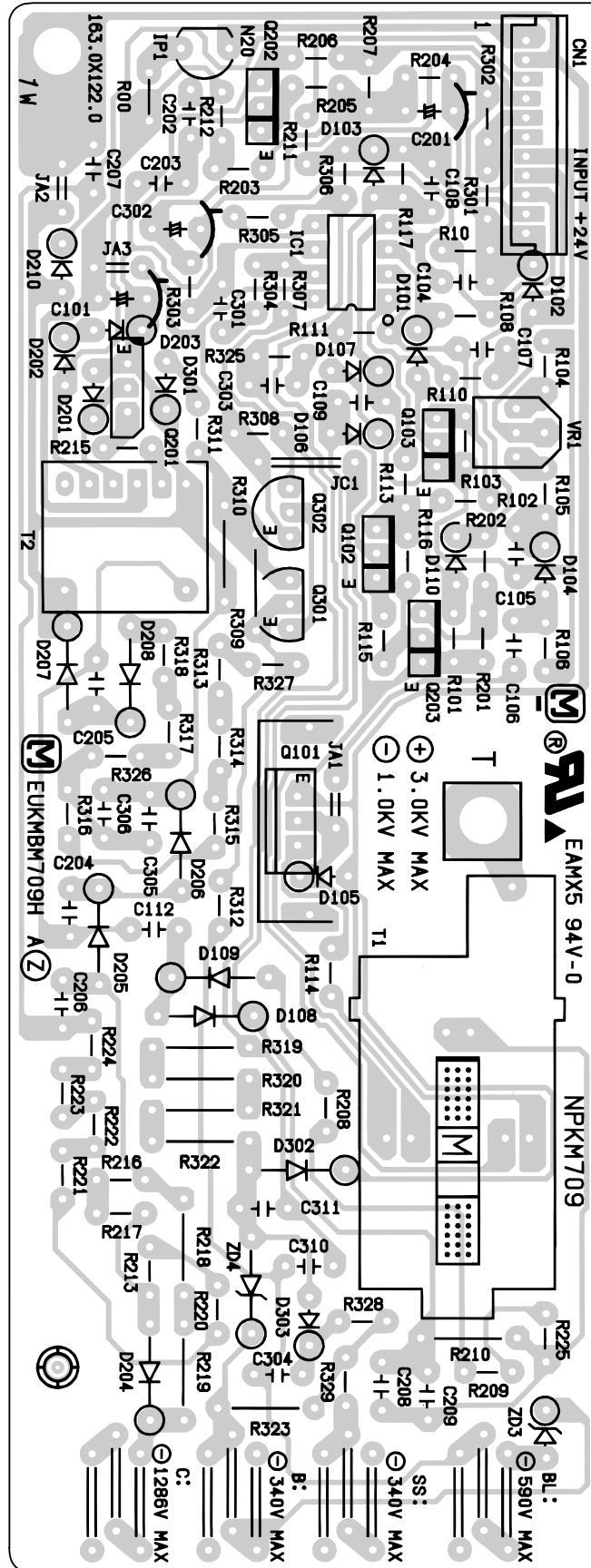


Note: Since the parts of this PWB cannot be supplied, change it as a unit.



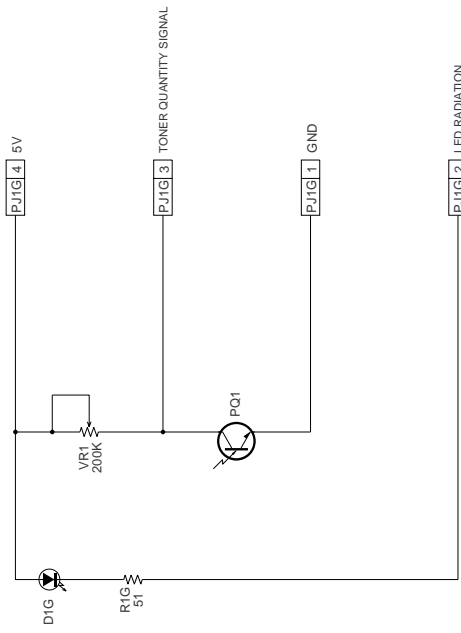
### High voltage PWB parts layout

Note: Since the parts of this PWB cannot be supplied, change it as a unit.

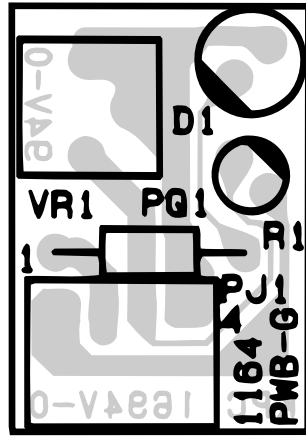


[7] Toner empty PWB circuit

1/1



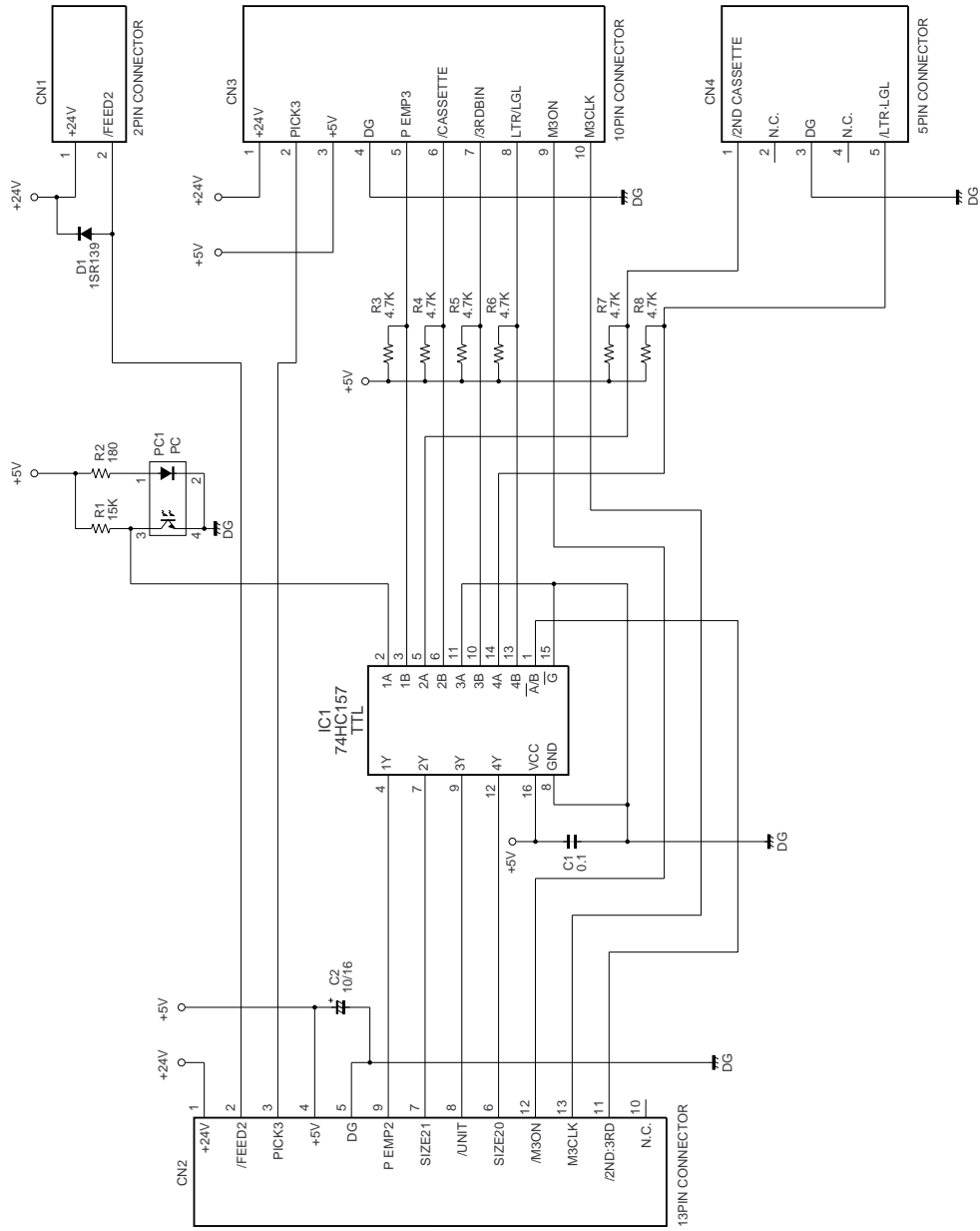
Toner empty PWB parts layout



Note: Since the parts of this PWB cannot be supplied, change it as a unit.

[8] 2nd. cassette PWB circuit

1/1

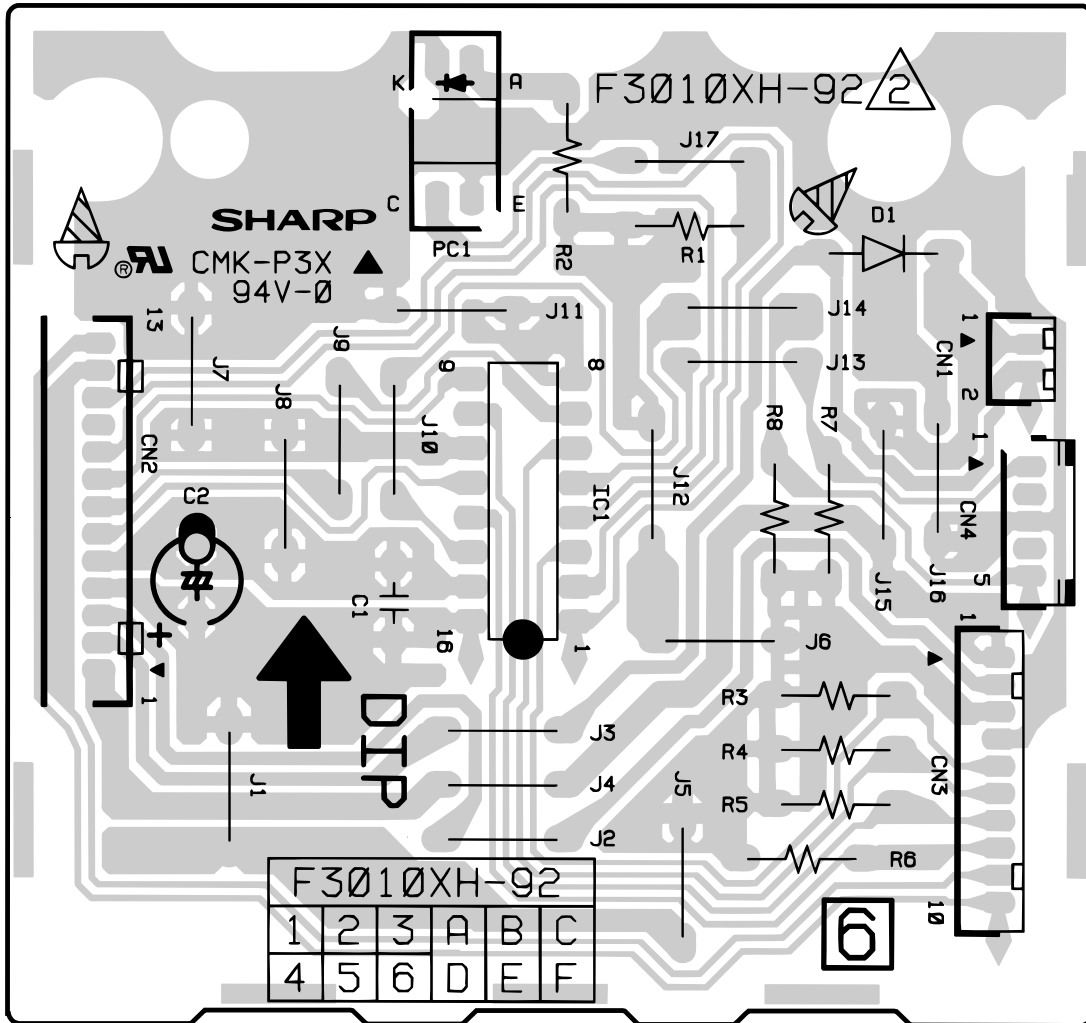


Note: Since the parts of this PWB cannot be supplied, change it as a unit.

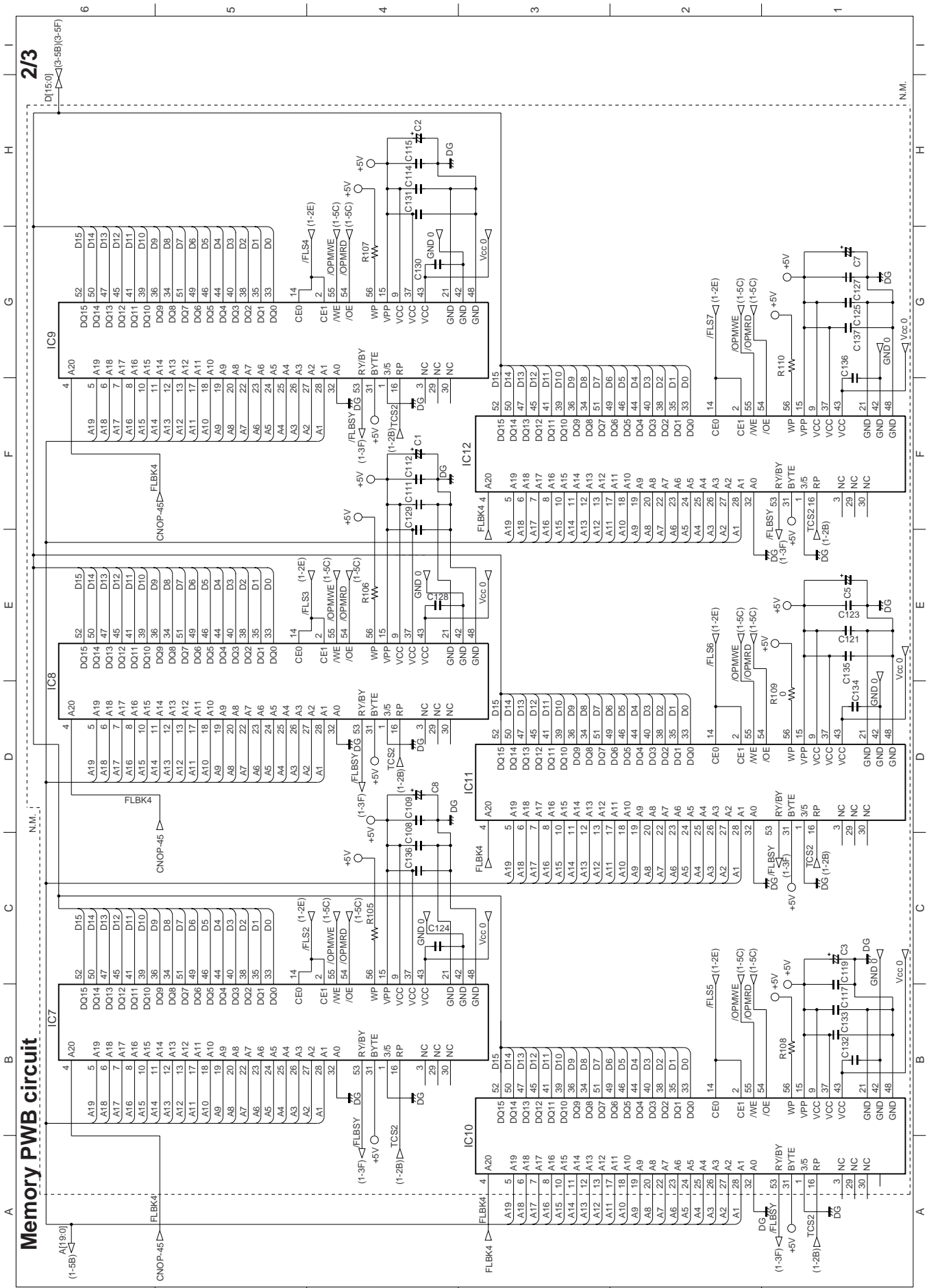


## 2nd. cassette PWB parts layout

Note: Since the parts of this PWB cannot be supplied, change it as a unit.







Memory PWB circuit

3/3

